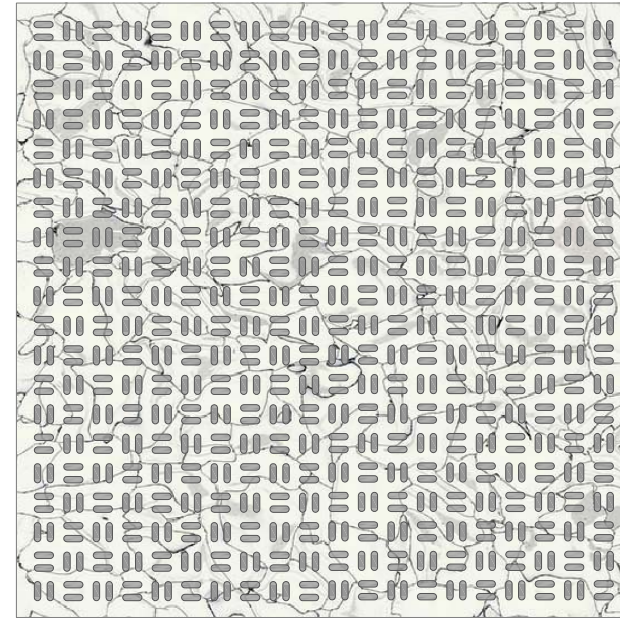


# Product Data Sheet

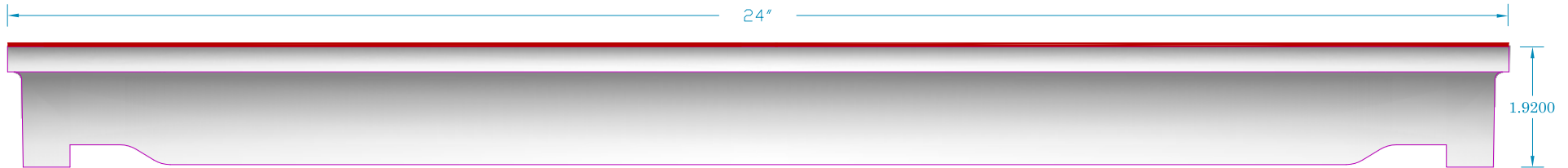
## HS 24 Panel Performance Data Sheet 24.2% Open Area

3.00	Understructure Model Number	30AAS		
3.10		USCS		SI
3.11	Maximum Rolling Load:			
3.12		Wheel 1: 10 Passes	1270 lbs	5.65 kN
3.13		Wheel 2: 10,000 Passes	1000 lbs	4.45 kN
3.14	Max. Rolling Load Permanent Set, in.	Wheel 1 Start:	0 in	0.00 mm
3.15	(Note 1)	10 Passes	0.009 in	0.22 mm
3.16	Max. Rolling Load Permanent Set	Wheel 2 Start:	0 in	0.00 mm
3.17	(Note 2)	500 Passes	0.001 in	0.02 mm
3.18		5,000 Passes	0.005 in	0.12 mm
3.19		10,000 Passes	0.006 in	0.15 mm
3.20	Design Concentrated Load, 1" X 1" (2.54cm x 2.54cm) Block		1500 lbs	6.67 kN
3.21	Ultimate Concentrated Load,		3443 lbs	15.32 kN
3.22	Design Uniform Load,		375 lbs/ft <sup>2</sup>	15.50 kN/m <sup>2</sup>
3.23	Ultimate Uniform Load (Note 6)		500 lbs/ft <sup>2</sup>	20.66 kN/m <sup>2</sup>
3.24	Maximum Drop Height for Impact, in.: Body 1 (Note 3)		150 lbs	0.67 kN
3.25	Materials of Construction	Cast Aluminum		
3.26	Painted Parts	None		
3.27	Ease of Access to Subfloor	High		
3.28	Ease of Field Cutting and Sawing	Easy		
3.29	Nonmagnetic (Nonferrous)	Yes		
3.30	Fuel Contribution Factor per ASTM E-84-84	0		
3.31	Flame Spread per ASTM E-84-84	0		
3.32	Smoke Density Factor per ASTM E-84-84	0		
3.33	Static Dissipation	Excellent		
3.34	Max. Ohms (DC) Between Uncovered Surface and Bottom of Panel	1		
3.35	Surface to Ground Resistance NFPA 99 Chapter 3	Forbo®	Nevamar® Laminate	Epoxy Paint
3.36		Static Dissipative	1 x 10 <sup>6</sup> - 1 x 10 <sup>8</sup>	1 x 10 <sup>6</sup> - 1 x 10 <sup>10</sup>
3.37		Electrically Conductive	5 x 10 <sup>4</sup> - 1 x 10 <sup>6</sup>	2.5 x 10 <sup>4</sup> - 1 x 10 <sup>6</sup>
3.38	Resistance to Oxidization in High Humidity	Excellent		
3.39	Resistance to Acids and Polar Solvents	Fair		
3.40	Resistance to Organic (Nonpolar) Solvents	Excellent		
3.41	Suitable Covering Material	All		
3.42	Weight of Panel	.080" Vinyl Tile	21.5 lbs	9.76 kg
		.125" Vinyl Tile	23.5 lbs	10.67 kg
3.43	Overall Dimensions Less Covering Material, L' X W'		24in x 24in	60.96cm x 60.96cm
3.44	Depth at Edge Less Covering Material, in.		1.92 in	48.77 mm
3.45	Warranty		1 Year	
3.46	Approximate Delivery	<3000 Ft <sup>2</sup> (300m <sup>2</sup> )		12 Weeks
		>3000 Ft <sup>2</sup> (300m <sup>2</sup> )		12 Weeks

Notes	
1	Wheel 1: 3" (7.62cm) dia. x 1.81" (4.59cm) wide
2	Wheel 2: 6" (15.24cm) dia. X 2" (5.08cm) wide
3	Body 1: 1" (2.54cm) dia. steel indenter
4	Panels and understructure can be custom designed to meet the requirements of any application
5	All values given are for panels without covering material
6	Test performed using a 30" x 30" pneumatic air bag



Top View of HS 24 Panel



CEI PART #: HS 24 Panel with Vinyl Tile			
DRAWN BY: M C.			
PAPER SIZE = 8.5' x 11" LASER			
SHEET: 1	SCALE: 2.5 = 1	DATE: 14 Dec 2015	Rev: 27 Oct 2017
PATH=C:\monica\desktop\autocad drawings\Maxcess Product Data Sheets Master.DWG			



**COMPUTER ENVIRONMENTS, INC.**

1616 JOHN WEST ROAD DALLAS, TX, USA 75228 214 321 1234 FAX 214 321 2333 ceifloor.com  
Manufactured in the U.S.A.

PART OR PROJECT DESCRIPTION HS 24 Panel with Vinyl Tile