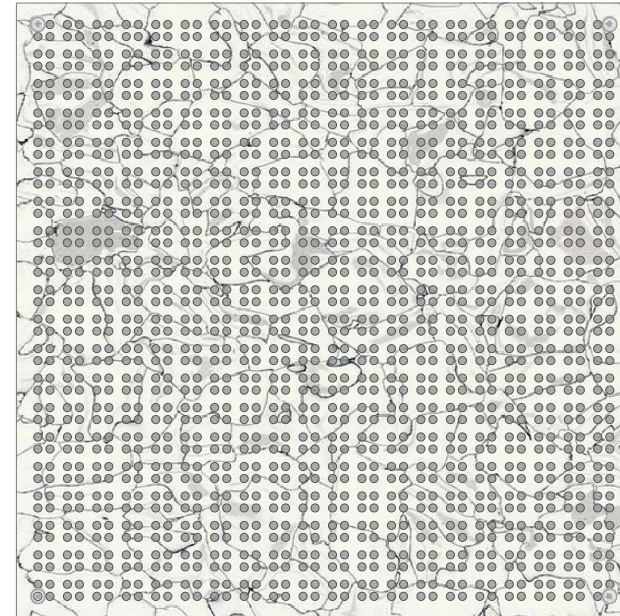


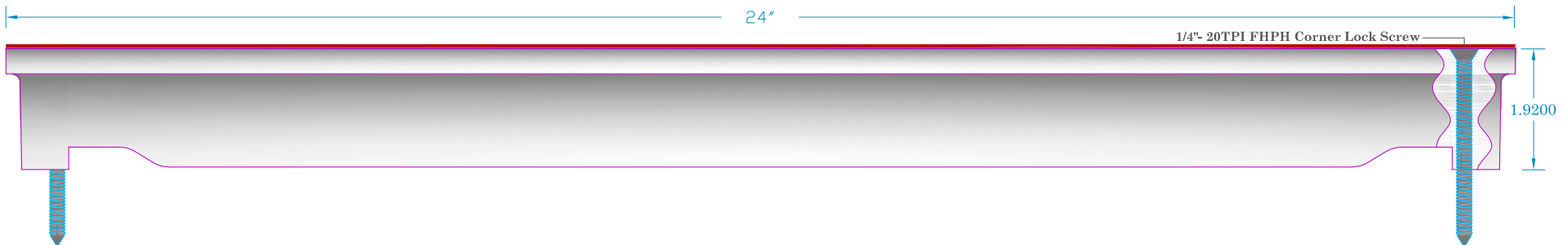
Product Data Sheet


HR 24 Panel Performance Data Sheet 15.3% Open Area				
3.00	Understructure Model Number		USCS	30AAS
3.10			SI	
3.11	Maximum Rolling Load:			
3.12		Wheel 1: 10 Passes	1270 lbs	5.65 kN
3.13		Wheel 2: 10,000 Passes	1000 lbs	4.45 kN
3.14	Max. Rolling Load Permanent Set, in.	Wheel 1 Start:	0 in	0.00 mm
3.15	(Note 1)	10 Passes	0.011 in	0.27 mm
3.16	Max. Rolling Load Permanent Set	Wheel 2 Start:	0 in	0.00 mm
3.17	(Note 2)	500 Passes	0.004 in	0.10 mm
3.18		5,000 Passes	0.011 in	0.27 mm
3.19		10,000 Passes	0.015 in	0.37 mm
3.20	Design Concentrated Load, 1" X 1" (2.54cm x 2.54cm) Block		1500 lbs	6.67 kN
3.21	Ultimate Concentrated Load,		3443 lbs	15.32 kN
3.22	Design Uniform Load,		375 lbs/ft ²	15.50 kN/m ²
3.23	Ultimate Uniform Load (Note 6)		500 lbs/ft ²	20.66 kN/m ²
3.24	Maximum Drop Height for Impact, in.: Body 1 (Note 3)		150 lbs	0.67 kN
3.25	Materials of Construction		Cast Aluminum	
3.26	Painted Parts		None	
3.27	Ease of Access to Subfloor		High	
3.28	Ease of Field Cutting and Sawing		Easy	
3.29	Nonmagnetic (Nonferrous)		Yes	
3.30	Fuel Contribution Factor per ASTM E-84-84		0	
3.31	Flame Spread per ASTM E-84-84		0	
3.32	Smoke Density Factor per ASTM E-84-84		0	
3.33	Static Dissipation		Excellent	
3.34	Max. Ohms (DC) Between Uncovered Surface and Bottom of Panel		1	
3.35	Surface to Ground Resistance NFPA 99 Chapter 3		Forbo®	Navimar® Laminate
3.36		Static Dissipative	1 x 10 ⁶ - 1 x 10 ⁶	1 x 10 ⁶ - 1 x 10 ¹⁰
3.37		Electrically Conductive	5 x 10 ⁴ - 1 x 10 ⁶	2.5 x 10 ⁴ - 1 x 10 ⁶
3.38	Resistance to Oxidization in High Humidity		Excellent	
3.39	Resistance to Acids and Polar Solvents		Fair	
3.40	Resistance to Organic (Nonpolar) Solvents		Excellent	
3.41	Suitable Covering Material		All	
3.42	Weight of Panel	.080" Vinyl Tile	23.5 lbs	10.67 kg
		.125" Vinyl Tile	25.5 lbs	11.58 kg
3.43	Overall Dimensions Less Covering Material, L' X W'		24in x 24in	60.96cm x 60.96cm
3.44	Depth at Edge Less Covering Material, in.		1.92 in	48.77 mm
3.45	Warranty		1 Year	
3.46	Approximate Delivery	<3000 Ft ² (300m ²)	12 Weeks	
		>3000 Ft ² (300m ²)	12 Weeks	

Notes	
1	Wheel 1: 3" (7.62cm) dia. x 1.81" (4.59cm) wide
2	Wheel 2: 6" (15.24cm) dia. X 2" (5.08cm) wide
3	Body 1: 1" (2.54cm) dia. steel indenter
4	Panels and understructure can be custom designed to meet the requirements of any application
5	All values given are for panels without covering material
6	Test performed using a 30" x 30" pneumatic air bag



Top View of HR 24 Cornerlock Panel



CEI PART #: HR 24 Cornerlock Panel with Vinyl Tile				 COMPUTER ENVIRONMENTS, INC. 1616 JOHN WEST ROAD DALLAS, TX, USA 75228 214 321 1234 FAX 214 321 2333 ceifloor.com Manufactured in the U.S.A.	
DRAWN BY: M C.					
PAPER SIZE = 8.5" x 11" LASER					
SHEET: 1	SCALE: 2.5 = 1	DATE: 14 Dec 2015	Rev: 27 Oct 2017		
PATH=C:\monica\desktop\autocad drawings\Maxcess Product Data Sheets Master.DWG				PART OR PROJECT DESCRIPTION: HR 24 Cornerlock Panel with Vinyl Tile	