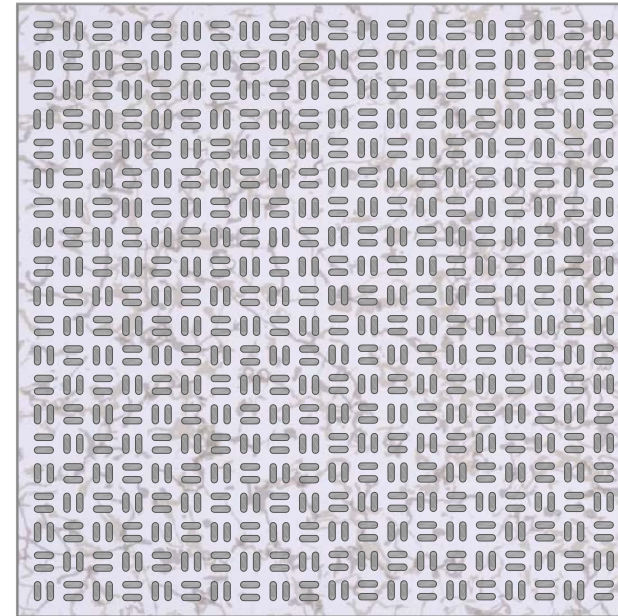


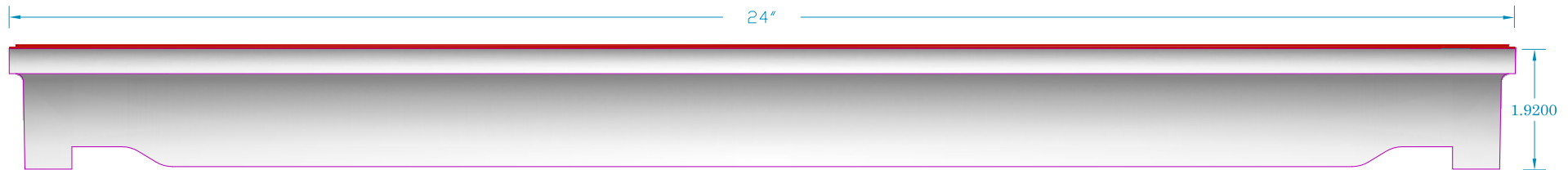
Product Data Sheet

HS 24 Panel Performance Data Sheet 24.2% Open Area				
3.00	Understructure Model Number		30AAS	
3.10			USCS	SI
3.11	Maximum Rolling Load:			
3.12		Wheel 1: 10 Passes	1270 lbs	5.65 kN
3.13		Wheel 2: 10,000 Passes	1000 lbs	4.45 kN
3.14	Max. Rolling Load Permanent Set, in.	Wheel 1 Start:	0 in	0.00 mm
3.15	(Note 1)	10 Passes	0.009 in	0.22 mm
3.16	Max. Rolling Load Permanent Set,	Wheel 2: Start	0 in	0.00 mm
3.17	(Note 2)	500 Passes	0.001 in	0.02 mm
3.18		5,000 Passes	0.005 in	0.12 mm
3.19		10,000 Passes	0.006 in	0.15 mm
3.20	Design Concentrated Load, 1" X 1" (2.54cm x 2.54cm) Block		1500 lbs	6.67 kN
3.21	Ultimate Concentrated Load,		3443 lbs	15.32 kN
3.22	Design Uniform Load,		375 lbs/ft ²	15.50 kN/m ²
3.23	Ultimate Uniform Load (Note 6)		500 lbs/ft ²	20.66 kN/m ²
3.24	Maximum Drop Height for Impact, in.: Body 1 (Note 3)		150 lbs	0.67 kN
3.25	Materials of Construction		Cast Aluminum	
3.26	Painted Parts		None	
3.27	Ease of Access to Subfloor		High	
3.28	Ease of Field Cutting and Sawing		Easy	
3.29	Nonmagnetic (Nonferrous)		Yes	
3.30	Fuel Contribution Factor per ASTM E-84-84		0	
3.31	Flame Spread per ASTM E-84-84		0	
3.32	Smoke Density Factor per ASTM E-84-84		0	
3.33	Static Dissipation		Excellent	
3.34	Max. Ohms (DC) Between Uncovered Surface and Bottom of Panel		1	
3.35	Surface to Ground Resistance NFPA 99 Chapter 3		Forbo®	Newamar® Laminate Epoxy Paint
3.36		Static Dissipative	1 x 10 ⁶ - 1 x 10 ⁶	1 x 10 ⁶ - 1 x 10 ¹⁰ NA
3.37		Electrically Conductive	5 x 10 ⁴ - 1 x 10 ⁶	2.5 x 10 ⁴ - 1 x 10 ⁶ 1 x 10 ³ - 1 x 10 ⁹
3.38	Resistance to Oxidization in High Humidity		Excellent	
3.39	Resistance to Acids and Polar Solvents		Fair	
3.40	Resistance to Organic (Nonpolar) Solvents		Excellent	
3.41	Suitable Covering Material		All	
3.42	Weight of Panel	1/16" HPL	21 lbs	9.53 kg
		1/8" HPL	22.5 lbs	10.22 kg
3.43	Overall Dimensions Less Covering Material, L" X W"		24in x 24in	60.96cm x 60.96cm
3.44	Depth at Edge Less Covering Material, in.		1.92 in	48.77 mm
3.45	Warranty		1 Year	
3.46	Approximate Delivery	<3000 Ft ² (300m ²)	12 Weeks	
		>3000 Ft ² (300m ²)	12 Weeks	

Notes	
1	Wheel 1: 3" (7.62cm) dia. x 1.81" (4.59cm) wide
2	Wheel 2: 6" (15.24cm) dia. X 2" (5.08cm) wide
3	Body 1: 1" (2.54cm) dia. steel indenter
4	Panels and understructure can be custom designed to meet the requirements of any application
5	All values given are for panels without covering material
6	Test performed using a 30" x 30" pneumatic air bag



Top View of HS 24 Panel



CEI PART #: HS 24 Panel with HPL					
DRAWN BY: M C.					
PAPER SIZE = 8.5' x 11" LASER					
SHEET: 1	SCALE: 2.5 = 1	DATE: 14 Dec 2015	Rev: 27 Oct 2017		
PATH=C:\monica\desktop\autocad drawings\Maxcess Product Data Sheets Master.DWG					



COMPUTER ENVIRONMENTS, INC.

1616 JOHN WEST ROAD DALLAS, TX, USA 75228 214 321 1234 FAX 214 321 2333 ceifloor.com
Manufactured in the U.S.A.

PART OR PROJECT DESCRIPTION
HS 24 Panel with HPL